



COMMERCIAL PROJECT SOLUTION
PRODUCT OVERVIEW





VINCO SPECIALIZES IN CREATING PRODUCTS THAT OFFER SOLUTIONS FOR SOME OF THE MOST CHALLENGING COMMERCIAL AND RESIDENTIAL APPLICATIONS IN THE INDUSTRY. OUR WINDOWS AND DOORS ARE DESIGNED TO ENDURE AND SAFEGUARD, PROVIDING UNMATCHED STRENGTH.

VINCO RISES TO THE OCCASION FOR YOUR LARGEST PROJECTS, ADDRESSING HIGH-END COMMERCIAL AND RESIDENTIAL NEEDS, INCLUDING RETAIL SPACES, CONDOMINIUMS, LUXURY HIGH-RISES, MULTIFAMILY UNITS, EDUCATIONAL INSTITUTIONS, HOTELS, RESORTS, HEALTHCARE FACILITIES, MIXED-USE DEVELOPMENTS, AND BEYOND. OUR PRODUCTS ARE DESIGNER-FRIENDLY, IMPACT-RESISTANT, AND BUILT TO LAST—ALWAYS EMPHASIZING QUALITY AND RELIABILITY.



VINCO COMMERCIAL DIFFERENCE

● TWELVE YEARS OF EXPERIENCE

FOR MORE THAN 12 YEARS, VINCO HAS DEVELOPED PRODUCTS TO MEET THE EVOLVING NEEDS OF THE COMMERCIAL MARKET.



● ADVANCED ARCHITECTURAL ENGINEERING

WITH OUR EXCEPTIONAL ENGINEERING EXPERTISE, VINCO PRODUCTS ARE METICULOUSLY DESIGNED TO MEET ELEVATED STANDARDS, ENSURING THEY CAN WITHSTAND THE ELEMENTS AND THE DEMANDS OF EVERYDAY USE FOR YEARS TO COME.



● INNOVATIVE PRODUCT DEVELOPMENT

BY LEVERAGING THE LATEST TECHNOLOGIES AND FOCUSING ON ENHANCING MANUFACTURING PROCESSES, VINCO HAS DEVELOPED HIGH-PERFORMANCE COMMERCIAL PRODUCTS THAT ELEVATE ALL PROJECTS.



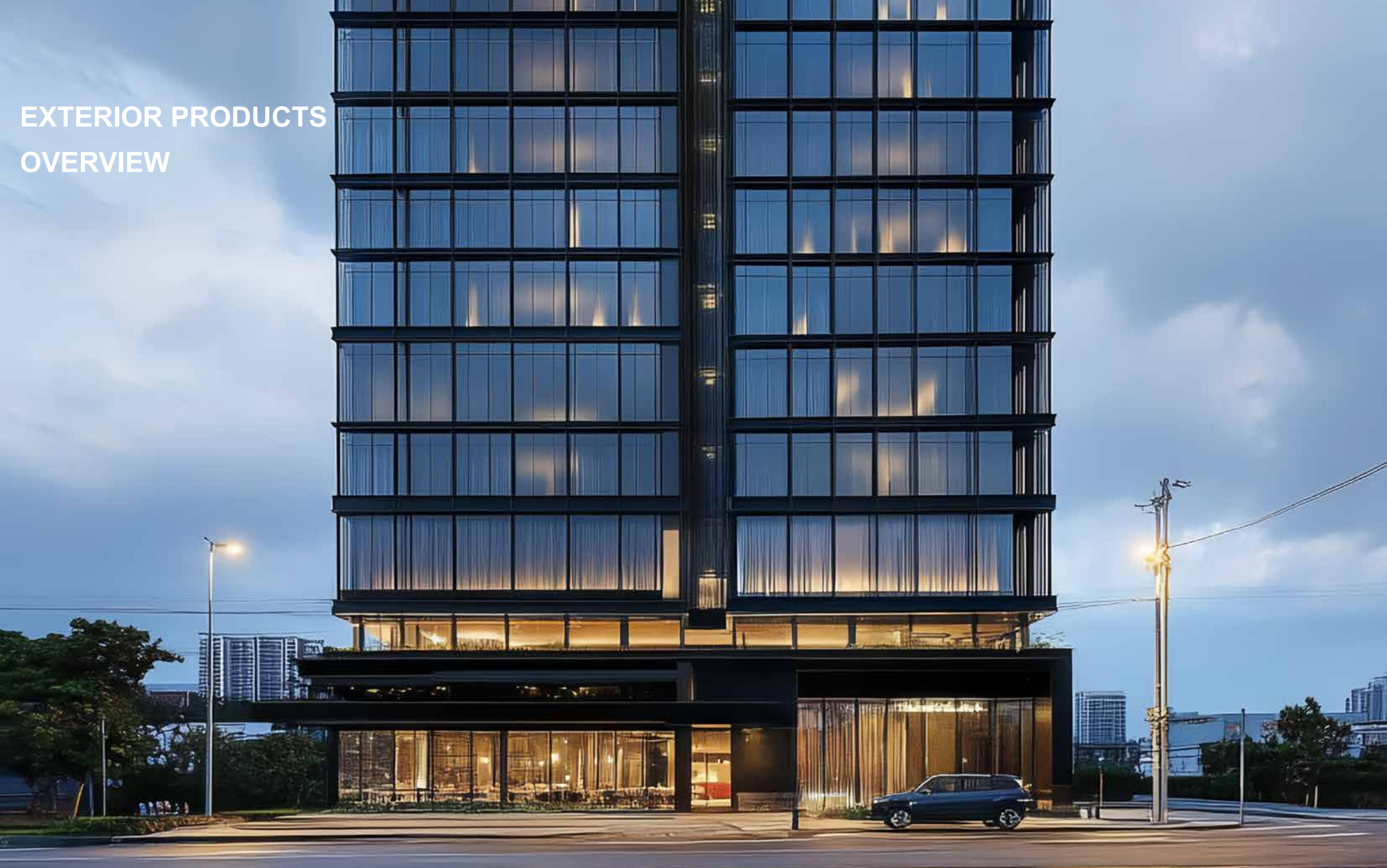
VINCO COMMERCIAL CATALOG

- EXTERIOR PRODUCTS PAGE 6
- INTERIOR PRODUCTS PAGE 16
- COMMERCIAL PROJECT PAGE 26

BENEFITS OF WORKING WITH VINCO COMMERCIAL

- SPECIFICATION WRITING
- OPTIMIZED PRODUCT SELECTION (FUNCTIONALITY, AESTHETIC DESIGN INTENT, AND PROJECT BUDGET)
- CUSTOM PRODUCT DESIGN CONSULTATION
- ENGINEERING SUPPORT
- MATERIAL SAMPLES (FROM PROTOTYPES TO FULL MOCKS)
- PROFESSIONAL PROJECT MANAGEMENT
- JOBSITE SERVICES
- QUALITY CONTROL FIELD VISITS
- ON-TIME AND COMPLETE DELIVERY
- ROBUST WARRANTY

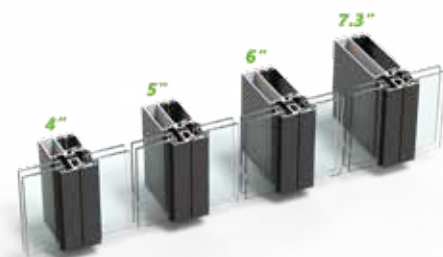
EXTERIOR PRODUCTS
OVERVIEW



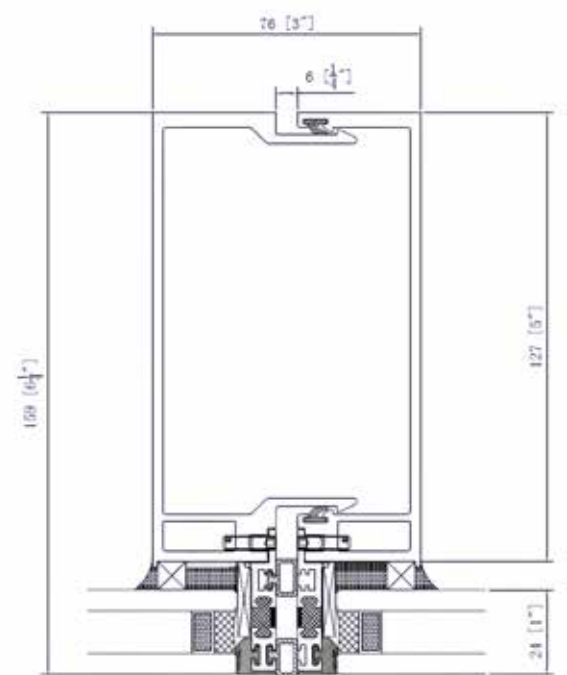
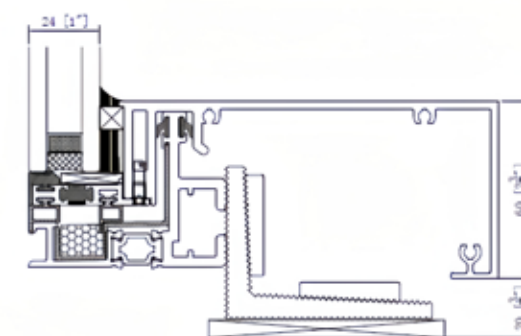
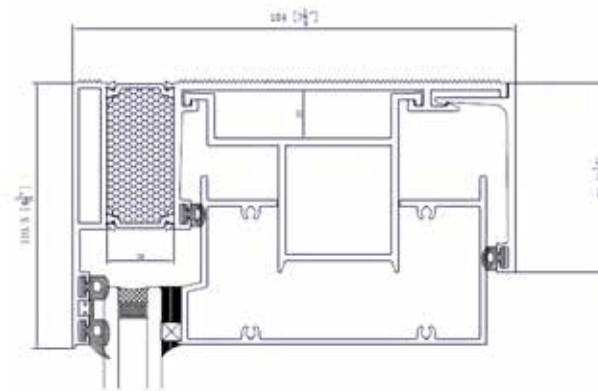
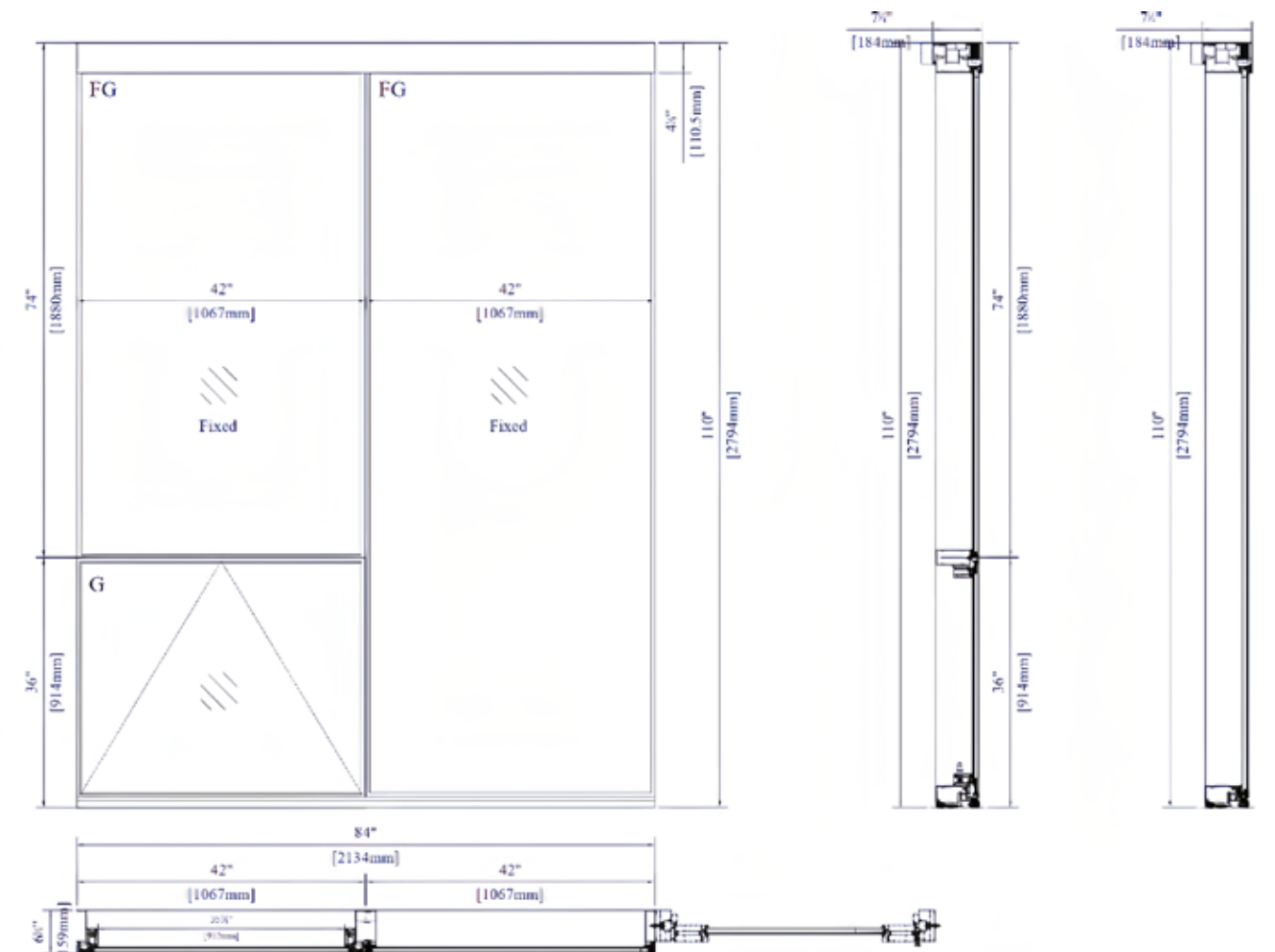


HIDDEN FRAME WINDOW WALL SYSTEM

- **HIDDEN FRAME:** SEAMLESS, MODERN AESTHETIC.
- **STRUCTURE:** HIGH-PERFORMANCE ALUMINUM ALLOY, WEATHER-RESISTANT.
- **ENERGY EFFICIENCY:** ENHANCED INSULATION, REDUCES CONSUMPTION.
- **SIGHT LINE:** 1/2"
- **DEPTH :** STANDARD 4", 5", 6", 7.3" DEPTH SYSTEM



MORE DETAIL





MORE DETAIL



• OFFSET PULL



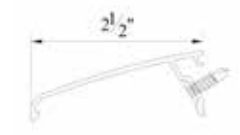
• WEATHER STRIP & ADA DOOR THRESHOLD



• PANIC BAR WITH DOGGING



• DOOR CLOSER



• DRIP 2.5 INCH



• WALL STOP



• CONTINUOUS HINGES



• OFFSET PULL HANDLE AND BAR

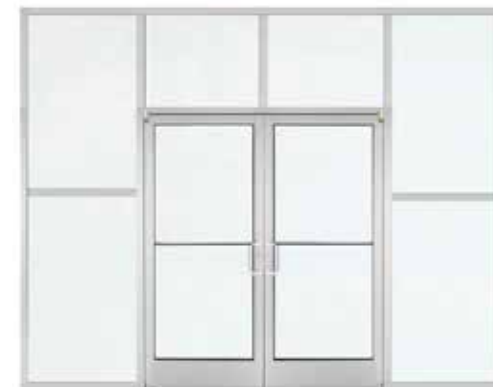
ALUMINUM THERMAL STOREFRONT SYSTEM

• **THERMAL PERFORMANCE:** ADVANCED INSULATION AND ENERGY EFFICIENCY.

• **GLAZING STOP AND GASKETS:** SQUARE , SNAP-ON,EXTRUDED-ALUMINUM STOPS AND PRE-FORMED GASKETS.

• **THERMAL BROKEN**

• **PRE-ASSEMBLED, UNITIZED PANEL**



PERFORMANCE	
SIGHTLINE	2 - 3/8 INCH FRAME FACE WIDTH
DEPTH	4-1/2" (115MM)
GLAZING	1" (25MM)
U-VALUE (DIFFER BY GLASS TYPES)	0.21-0.45 BTU/H·FT ² ·°F
WATER TIGHTNESS	720 PA
WIND LOAD CAPACITY	5035 PA



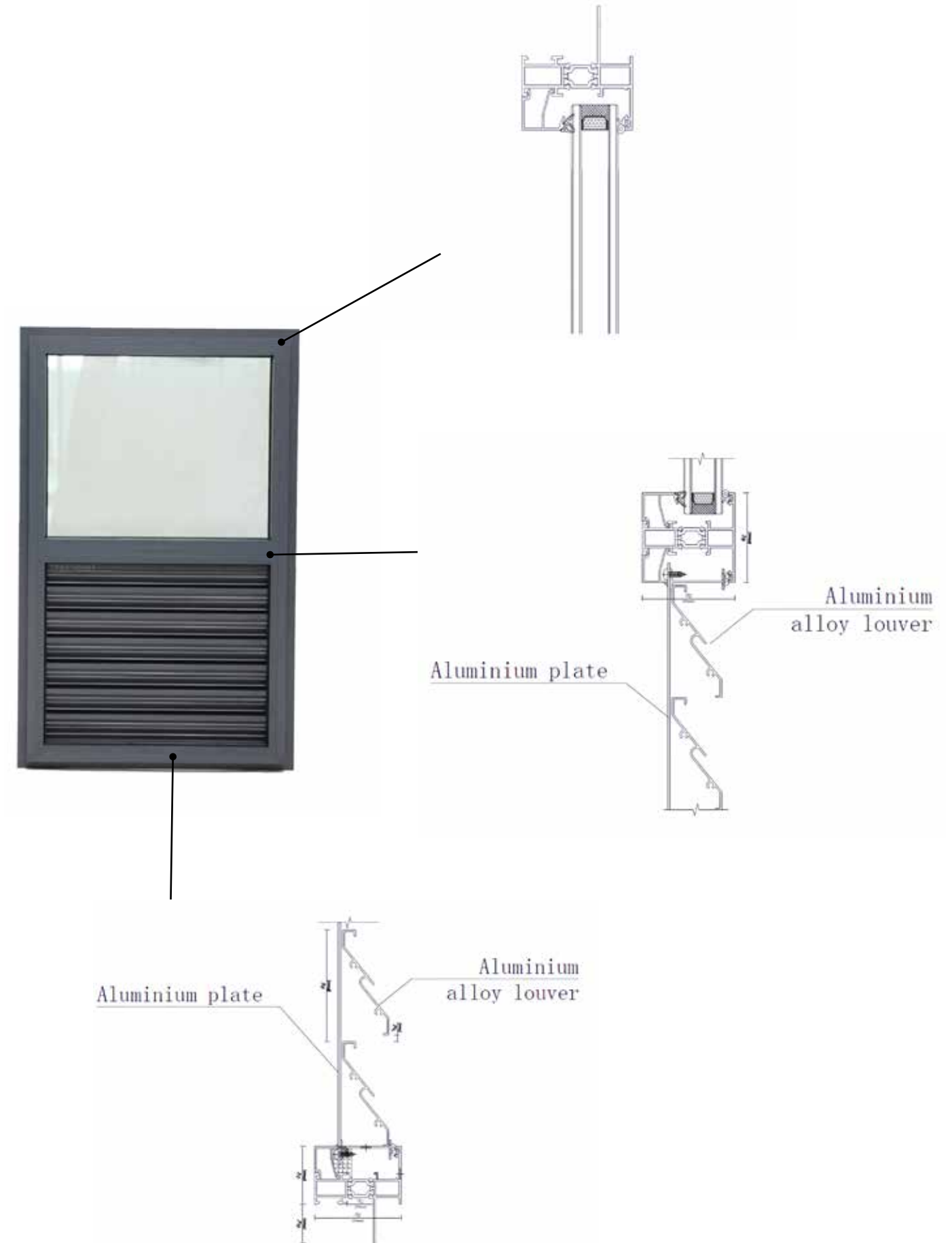


PTAC WINDOW (FIXED)

- **INTEGRATED DESIGN:** COMBINES COOLING, HEATING, AND VENTILATION.
- **ENERGY EFFICIENCY:** ADVANCED ENERGY MANAGEMENT REDUCES COSTS.
- **VERSATILE APPLICATION:** SUITABLE FOR HOTELS, OFFICES, AND MORE.
- **MATERIAL:** ALUMINUM 6063-T5
- **COLORS:** BLACK, DARK BRONZE, CUSTOM COLORS



MORE DETAIL



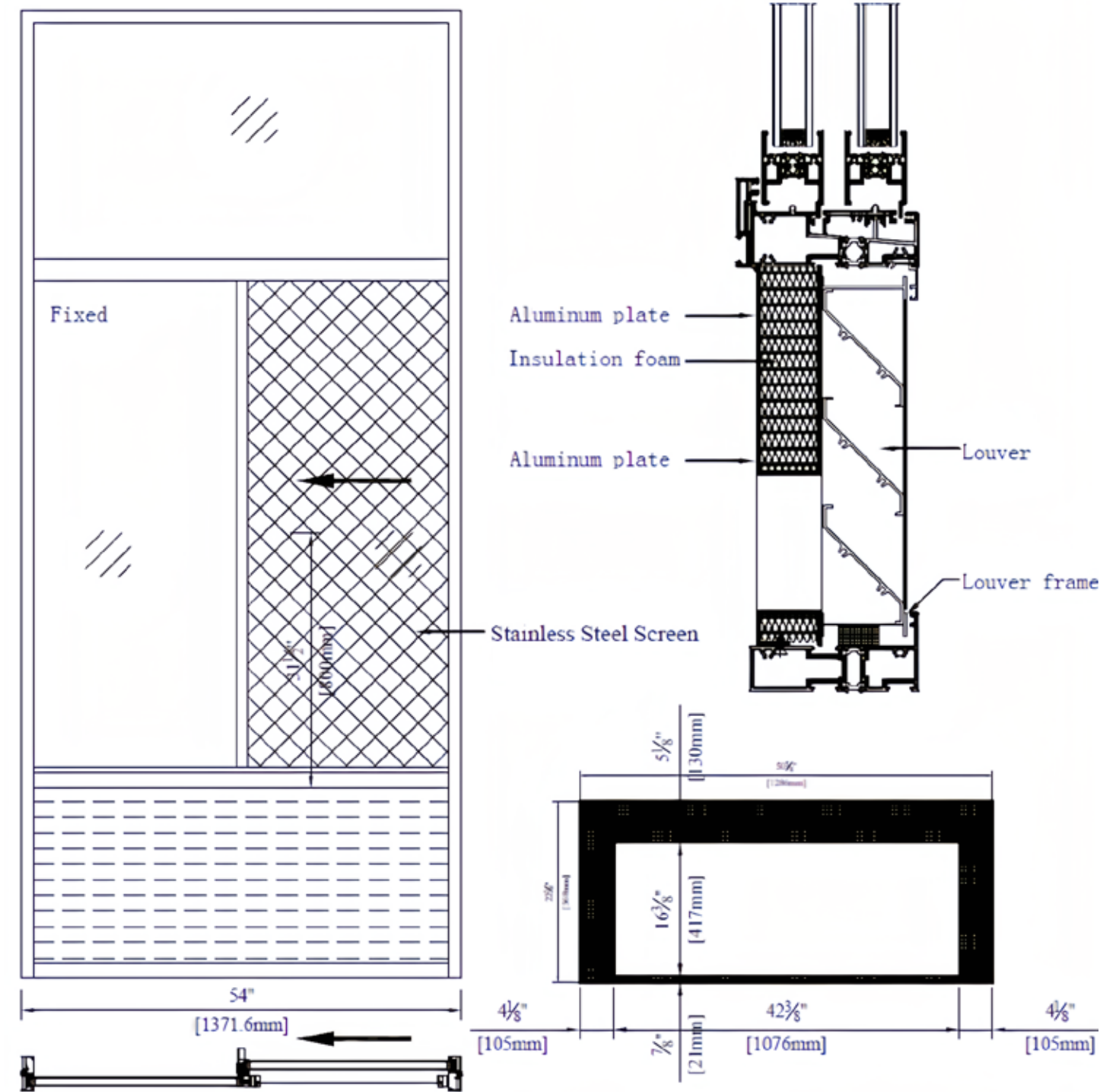


PTAC WINDOW (SLIDING)

- **INSTALLATION:** FEATURES EXPERTLY CRAFTED MITERED CORNERS WITH INTERNAL SUPPORT GUSSETS AND DURABLE STAINLESS-STEEL SCREWS, COMBINED WITH LOW-MAINTENANCE ALUMINUM FRAMES.
- **DESIGN VERSATILITY:** CAPABLE OF BEING MULLED INTO CONFIGURATIONS OF UP TO 5 UNITS, WITH A MAXIMUM UNIT WIDTH OF 20 FEET AND A TOTAL AREA LIMIT OF 120 SQUARE FEET.
- **ENERGY PERFORMANCE:** CONSTRUCTED WITH THERMALLY BROKEN ALUMINUM FRAMES AND LOW-E GLASS, DESIGNED TO ENHANCE ENERGY EFFICIENCY, MAKING THEM SUITABLE FOR EXTREME WEATHER CONDITIONS.
- **FLEXIBLE OPTIONS:** AVAILABLE WITH EITHER PARTIAL OR FULL-BLANK PANEL DESIGNS.
- LIMIT OPEN 4 INCH , SCREEN IS AVAILBLE



MORE DETAIL



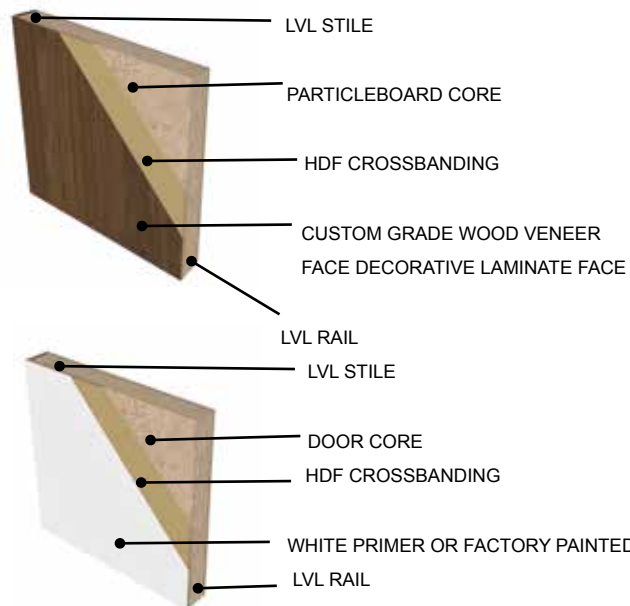
INTERIOR PRODUCTS OVERVIEW





INTERIOR WOOD DOORS

- **UPGRADE YOUR ROOM:** ENHANCE THE OVERALL STYLE OF YOUR BEDROOM WITH HIGH-QUALITY DOORS.
- **METICULOUSLY DESIGNED:** THE DOORS ARE THOUGHTFULLY CRAFTED, EMPHASIZING ELEGANCE.
- **DURABILITY:** BUILT TO LAST, ENSURING LONG-TERM USE.
- **HIGH-QUALITY MATERIALS:** MADE FROM SOLID WOOD AND COMPOSITE WOOD FOR SUPERIOR QUALITY.



PAGE 18



FIRE RATING DOOR

- **PRIVACY AND TRANQUILITY:** DESIGNED FOR PRIVACY AND A PEACEFUL STAY.
- **ENHANCED SECURITY FEATURES:** INCLUDES ADVANCED SAFETY FEATURES.
- **FIRE RESISTANCE AND ANTI-THEFT:** PRIORITIZES SAFETY WITH FIRE RESISTANCE AND ANTI-THEFT CAPABILITIES.



FIREPROOF ROCK WOOL



SHERWIN WILLIAMS COLOR
CARDS AVAILABLE
FIRE RATING
UL 90/180 MINS



DISASSEMBLY, WELDING ASSEMBLY-



PAGE 19



WPC DOOR

- **WATERPROOF AND MOISTURE-RESISTANT**
- **TERMITE-RESISTANT**
- **SOUNDPROOFING:** ENHANCED LIVING EXPERIENCE
- **ENVIRONMENTALLY FRIENDLY:** LOW FORMALDEHYDE CONTENT, RECYCLABLE MATERIALS
- **CUSTOMIZABLE:** COLORS, DESIGNS, HIDDEN HINGES, SMART LOCKS
- **EASY TO INSTALL:** PRE-FABRICATED, MOISTURE-RESISTANT





SPC FLOORING PRODUCT STRUCTURE



CLICK-SPC



CLICK-SPC WITH UNDER LAYER

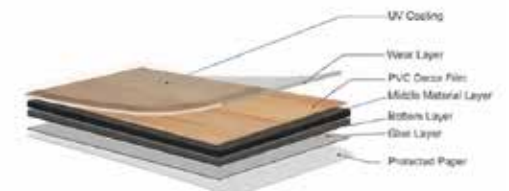
LVT FLOORING PRODUCT STRUCTURE



CLICK



DRY BACK



SELF ADHESIVE

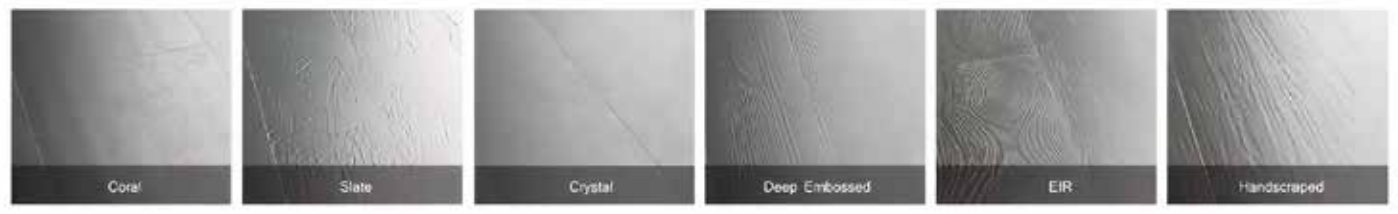


LOOSE LAY

VINYL FLOOR

PRODUCT SPECIFICATION

	LVT	SPC
SIZE	6"X36" 6"X48" 7"X48" 9"X48"	6"X48" 7" X48" 9" X48" 9"X36" 12"X24" 9"X60"
THICKNESS	1.5 --5.0MM	3.8 --8MM
WEAR LAYER	0.07--0.7MM	0.15--0.7MM

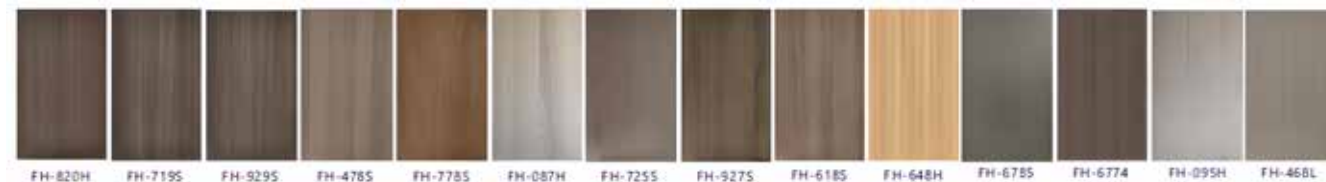




CABINET

- **SIMPLE:** UNIQUE DOOR PANEL LINES AND HANDLE DESIGN, INTEGRATED INTO THE DESIGN OF STORAGE SYSTEM. NATURE AND LEISURELY KITCHEN IN PASTORALISM, PRESENTS HIGH QUALITY AND SLOW RHYTHM.

- **STICKNEY:** THE BEAUTIFUL MATCHING OF PURE COLOR AND WOOD GRAIN CREATES A HOMELY AMBIANCE IN THE KITCHEN. PET, FOOD GRADE MATERIAL, CARES FOR FAMILY HEALTH, ENCOURAGING YOU TO SIT DOWN WITH FRIENDS, EAT GREAT FOOD AND LOUNGE AT THE TABLE.



BATHROOM

- **VANITY:** YOU CAN CHOOSE THE SIZE, COLOR, AND ACCESSORIES THAT SUIT YOUR PREFERENCES AND NEEDS.

- **SHOWER DOOR:** IT IS A CAREFULLY DESIGNED PRODUCT DESIGNED TO DELIVER SUPERIOR PERFORMANCE AND SAFETY AS WELL AS A COMPELLING AESTHETIC APPEARANCE.

- **TOILET:** WITH THE SIMPLI AND ELEGANT FEELING, CREATE THE MORE CLEARLY AND DIRECTLY STYLE



COMMERCIAL PROJECTS



- HOTEL-RESIDENCE INN-TX
- LOCATION: HOUSTON, TX
- PRODUCTS: STOREFRONT, FIXED WINDOW, COMMERCIAL DOOR



- HOTEL-HAMPTON INN & SUITES
- LOCATION: FORT WORTH, TX
- PRODUCTS: PTAC WINDOW, COMMERCIAL DOOR



- HOTEL - DOUBLE-TREE HOTEL BY HILTON
- LOCATION: PERTH, AUSTRALIA
- PRODUCTS: UNITIZED CURTAIN WALL, GLASS PARTITION



- APARTMENT
- LOCATION: BIRMINGHAM, UK
- PRODUCTS: THERMAL BREAK ALUMINUM WINDOWS AND DOORS, CASEMENT WINDOW



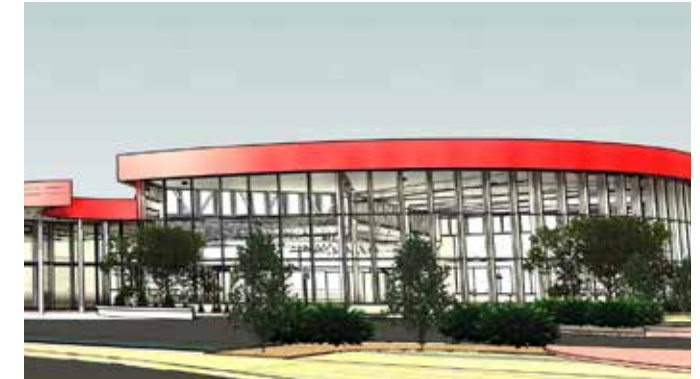
- APARTMENT - OLYMPIC TOWER
- LOCATION: PHILADELPHIA
- PRODUCTS: SLIDING DOOR, CURTAIN WALL, WINDOW WALL, COMMERCIAL DOOR



- HOTEL - RESIDENCE INN - MI
- LOCATION: PITTSFIELD TWP, MI
- PRODUCTS: PTAC WINDOW, STOREFRONT



- BANK - GRAND BANK FOR SAVINGS FSB
- LOCATION: HATTIESBURG, MISSISSIPPI
- PRODUCTS: WINDOW WALL, WINDOW WALL, STAINLESS STEEL STRUCTURE



- ELES OFFICE BUILDING
- LOCATION: WARREN, MICHIGAN
- PRODUCTS: STICK CURTAIN WALL SYSTEM, STEEL STRUCTURE CURTAIN WALL



- HIGH RISE APARTMENT - THE PIER
- LOCATION: TEMPE, AZ
- PRODUCTS: SLIM FRAME HEAVY-DUTY SLIDING DOOR, WINDOW WALL, BALCONY DIVIDER GLASS



- OFFICE BUILDING - DELTAX GLOBAL
- LOCATION: NEW YORK
- PRODUCTS: ALUMINUM CLAD PANEL CURTAIN WALL



- APARTMENT
- LOCATION: LOS ANGELES, CA
- PRODUCTS: CORNER SLIDING DOOR WITHOUT MULLION, CORNER FIXED WINDOW WITHOUT MULLION, COMMERCIAL ENTRY DOOR



- APARTMENT
- LOCATION: PHILADELPHIA
- PRODUCTS: FIXED WINDOW, CASEMENT WINDOW, HINGED DOOR, COMMERCIAL DOOR.



info@vincowindow.com

www.vincowindow.com

+1 (623) 387 7780

4227 S 36th Pl, Phoenix, AZ 85040



Whatsapp