



**RESIDENTIAL & COMMERCIAL
ALUMINUM PRODUCT OVERVIEW**





TABLE OF CONTENTS

RESIDENTIAL PRODUCT OVERVIEW	PAGE 4-25
COMMERCIAL PRODUCT OVERVIEW	PAGE 26-35
RESIDENTIAL PROJECTS	PAGE 36-37
COMMERCIAL PROJECTS	PAGE 38-39
CERTIFICATION	PAGE 40-41

Over the 12 years since its establishment, VINCO has been providing high quality products to the window and door industry. Innovative product design, exceptional quality and superior service have always been the driving objectives of VINCO to stand out in a competitive market. Meticulous attention to every detail of the manufacturing process, as well as ongoing quality checks and rigorous testing, ensures that only high quality products are in-

VINCO's design team has constructed a line that encompasses the major architectural needs of the residential industry. In all of VINCO's product lines, we choose premium materials, whether it's frames, sashes, hardware or glass. We manufacture our products with extreme attention to detail to ensure the strictest consistency in quality. VINCO windows and doors will provide crystal clear views, lower your heating and cooling costs, and provide incredible comfort for occupants all year round. You can count on reliable performance that will last the entire life of your home.

We want to be a true business partner, sharing our worldwide knowledge with fabricators, architects and other stakeholders. With our open and proactive collaboration approach we can realize the highest standards and get the best results in any project, big or small, together.

VINCO is the market leader in USA Custom house and we have acquired a strong market position in over 50 state, each with its own offices.



RESIDENTIAL PRODUCT OVERVIEW







STYLISH, DURABLE, ENERGY-EFFICIENT

VINCO'S ALUMINUM DOORS AND WINDOWS COMBINE MODERN DESIGN WITH EXCEPTIONAL DURABILITY, OFFERING EXCELLENT HEAT AND SOUND INSULATION FOR ENHANCED LIVING COMFORT.

ALUMINUM WINDOW



- **76 SERIES SLIMLINE WINDOW**
PAGE 8-9

ALUMINUM DOOR



- **200 SERIES EXTREMELY SLIM PANORAMIC
SLIDING DOOR**
PAGE 14-15



• **66 SERIES CONCEALED SASH WINDOW**
PAGE 10-11



• **108 SERIES SLIMLINE SLIDING WINDOW**
PAGE 12-13



• **150 SERIES MID-NARROW SLIDING DOOR**
PAGE 16-17



• **80 SERIES FOLDING DOOR**
PAGE 18-19



• **80 SERIES SWING DOOR**
PAGE 20-21

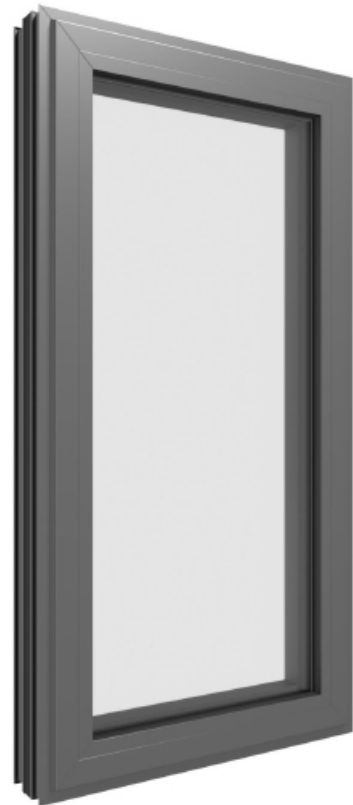
• **CAST ALUMINIUM EXTERIOR DOOR**
PAGE 22-23

• **U-CHANNEL ALUMINIUM GLASS RAILING**
PAGE 24-25



76 SERIES SLIMLINE WINDOW

- **HIGH PERFORMANCE:** THE 76 SERIES WINDOW IS ATTRACTIVE AND ENERGY-EFFICIENT.
- **STRONG MOISTURE RESISTANCE:** OFFERS EXCELLENT WATERPROOF CAPABILITIES.
- **SAFETY AND DURABILITY:** IDEAL FOR SCHOOLS, FOCUSING ON SAFETY AND DURABILITY.
- **FRAME SIGHTLINE:**
WINDOW FRAME: 1-5/7" (44MM)
OPERABLE WINDOW: 1" (24MM)
- **DEPTH:** 3" (76MM)
- **THERMAL BARRIER WIDTH:** 1" (25MM)
- **DESIGN:** ARCHITECTURALLY RECOMMENDED (AWWA)
- **CONFIGURATIONS:** AVAILABLE IN FIXED, PROJECTING, CASEMENT, AND TILT-TURN STYLES.
- **ADDITIONAL OPTIONS:** ENERGY-COMPLIANT, WITH THE OPTION FOR TRIPLE GLAZING.



DETAILS





66 SERIES CONCEALED SASH WINDOW

- **DESIGN AND DURABILITY:** COST-EFFECTIVE THERMALLY BROKEN WINDOW.
- **APPLICATIONS:** IDEAL FOR RESIDENTIAL AND MULTI-FAMILY PROJECTS.
- **WINDOW FRAME:** 1 47/64"
- **OPERABLE PANEL:** 1"
- **DEPTH:** 2 19/32"
- **THERMAL STRIPS:** 37/64"
- **OPTIONS:** ELEGANT FINISHES FOR ENHANCED FLEXIBILITY.







108 SERIES SLIMLINE SLIDING WINDOW

- **MODERN DESIGN:** NARROW SIGHTLINES FOR VERSATILITY.
- **ENERGY EFFICIENCY:** MEETS HIGH STC RATINGS FOR SOUND INSULATION.
- **WINDOW FRAME:** 1 1/2"
- **OPERABLE PANEL:** 13/16"
- **DEPTH:** 4 1/4"
- **SASH CONFIGURATION:** SINGLE OR DOUBLE SLIDER OPTIONS AVAILABLE.



DETAILS





SED200 SERIES SLIM PANORAMIC SLIDING DOOR

- **VISIBLE PANEL:** LESS THAN 1 INCH.
- **HEIGHT ADJUSTMENT:** EASY ROLLER ADJUSTMENT.
- **CONCEALED DESIGN:** HIDDEN TRACK AND FRAME.
- **CONVENIENT UNLOCKING:** INSTANT ACCESS.
- **VERSATILE DESIGN:** OPTIONS FOR PANEL-MOUNTED ROLLERS.
- **CAPACITY:** MAX HEIGHT OF 3M, WEIGHT UP TO 600KG.
- **ADVANCED FEATURES:** INCLUDES ELECTRIC OPENING AND SMART LOCKS.



DETAILS





150 SERIES MID-NARROW SLIDING DOOR

- **DURABLE STRUCTURE:** 2.5MM ALUMINUM ALLOY FRAME, IMPACT-RESISTANT.
- **EXCELLENT INSULATION:** 48MM INSULATION STRIP FOR ENERGY EFFICIENCY.
- **INSULATING GLASS:** GOOD LIGHTING, HEAT, AND SOUND INSULATION.
- **HIGH TRACK DESIGN:** SMOOTH SLIDING AND EASY OPERATION.
- **WINDOW FRAME:** 1 5/8"
- **OPERABLE PANEL:** 3 11/16"
- **DEPTH:** 5 3/4"



DETAILS





80 SERIES FOLDING DOOR

- **HIDDEN HINGES:** SLEEK DESIGN WITH CONCEALED HINGES FOR A MODERN LOOK.
- **THERMAL BREAK TECHNOLOGY:** REDUCES HEAT TRANSFER, IMPROVING ENERGY EFFICIENCY.
- **DURABLE MATERIALS:** MADE WITH HIGH-QUALITY ALUMINUM FOR LONG-LASTING PERFORMANCE.
- **VERSATILE DESIGN:** SUITABLE FOR VARIOUS APPLICATIONS, INCLUDING RESIDENTIAL AND COMMERCIAL SPACES.
- **WINDOW FRAME:** 1 11/16"
- **OPERABLE PANEL:** 2 7/16"
- **DEPTH:** 3 1/16"



DETAILS





80 SERIES SWING DOOR

- **FOUR-SIDED WEATHER STRIP:** PROVIDES WATERPROOFING, SOUNDPROOFING, ENERGY EFFICIENCY, AND DUST PROTECTION FOR A COMFORTABLE INDOOR ENVIRONMENT.
- **MULTI-LOCK DESIGN:** ENHANCES SECURITY, DETERRING INTRUSION AND VANDALISM.
- **PANEL SIZES UP TO 10 FEET:** OFFERS LARGER OPENINGS AND INCREASED NATURAL LIGHT.
- **MULTI-TRACK SYSTEM:** ADAPTS TO DIFFERENT SPATIAL LAYOUTS, IMPROVING TRAFFIC FLOW.
- **WINDOW FRAME:** 2 3/4"
- **OPERABLE PANEL:** 2 29/32"
- **DEPTH:** 3 1/8"
- **THERMAL STRIPS:** 1 25/64"



DETAILS





CAST ALUMINIUM EXTERIOR DOOR

- **LIGHTWEIGHT:** EASY TO INSTALL AND HANDLE.
- **CORROSION RESISTANT:** PROTECTS AGAINST RUST AND RAIN.
- **THERMAL INSULATION:** MAINTAINS INDOOR TEMPERATURES.
- **LOW MAINTENANCE:** SIMPLE TO CLEAN.
- **STYLISH DESIGN:** VERSATILE ALUMINUM FRAMES.
- **ENHANCED SECURITY:** AESTHETIC AND EASY MAINTENANCE.
- **304 STAINLESS STEEL HINGE:** SMOOTH OPERATION AND SUPPORTS DOORS OVER 150KG.



Product Structure





U-CHANNEL ALUMINUM GLASS RAILING

- **MATERIAL:** ALUMINUM ALLOY 6063-T5, POWDER-COATED.
- **CAP RAIL:** RECOMMENDED.
- **LED STRIP:** INSTALLED ON BOTH BOTTOM AND TOP.
- **FIXING METHOD:** WITH EXPANSION BOLTS.
- **INSTALLATION:** CONCRETE OR TIMBER FLOOR.
- **COVERS:** CUSTOMIZABLE ALUMINUM/STAINLESS STEEL.
- **COLOR:** MATT BLACK, MATT GREY, ANODIZING MATT SILVER
- **GLASS OPTION:** SINGLE GLASS: 12MM,
TEMPERED LAMINATED GLASS: 6+6/8+8





COMMERCIAL PRODUCT OVERVIEW



MODERN, DURABLE, SECURE

VINCO'S COMMERCIAL ALUMINUM DOORS AND WINDOWS FEATURE MODERN DESIGN AND DURABILITY, OFFERING SUPERIOR SECURITY AND ENERGY EFFICIENCY, PERFECT FOR VARIOUS BUSINESS ENVIRONMENTS.



- **HIDDEN FRAME WINDOW WALL SYSTEM**
PAGE 28-29



- **PTAC WINDOW (FIXED)**
PAGE 30-31



- **PTAC WINDOW (SLIDING)**
PAGE 32-33



- **ALUMINUM THERMAL STOREFRONT SYSTEM**
PAGE 34-35

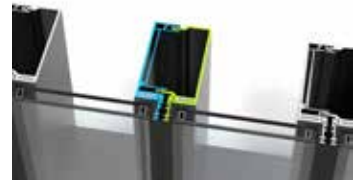


HIDDEN FRAME WINDOW WALL SYSTEM

- **HIDDEN FRAME:** SEAMLESS, MODERN AESTHETIC.
- **STRUCTURE:** HIGH-PERFORMANCE ALUMINUM ALLOY, WEATHER-RESISTANT.
- **ENERGY EFFICIENCY:** ENHANCED INSULATION, REDUCES CONSUMPTION.
- **SIGHT LINE:** 1/2"
- **DEPTH :** STANDARD 4", 5", 6", 7.3" DEPTH SYSTEM



DETAILS





PTAC WINDOW (FIXED)

- **INTEGRATED DESIGN:** COMBINES COOLING, HEATING, AND VENTILATION.
- **ENERGY EFFICIENCY:** ADVANCED ENERGY MANAGEMENT REDUCES COSTS.
- **VERSATILE APPLICATION:** SUITABLE FOR HOTELS, OFFICES, AND MORE.
- **MATERIAL:** ALUMINUM 6063-T5
- **COLORS:** BLACK, DARK BRONZE, CUSTOM COLORS



DETAILS





PTAC WINDOW (SLIDING)

- **INSTALLATION:** FEATURES EXPERTLY CRAFTED MITERED CORNERS WITH INTERNAL SUPPORT GUSSETS AND DURABLE STAINLESS-STEEL SCREWS, COMBINED WITH LOW-MAINTENANCE ALUMINUM FRAMES.

- **DESIGN VERSATILITY:** CAPABLE OF BEING MULLED INTO CONFIGURATIONS OF UP TO 5 UNITS, WITH A MAXIMUM UNIT WIDTH OF 20 FEET AND A TOTAL AREA LIMIT OF 120 SQUARE FEET.

- **ENERGY PERFORMANCE:** CONSTRUCTED WITH THERMALLY BROKEN ALUMINUM FRAMES AND LOW-E GLASS, DESIGNED TO ENHANCE ENERGY EFFICIENCY, MAKING THEM SUITABLE FOR EXTREME WEATHER CONDITIONS.

- **FLEXIBLE OPTIONS:** AVAILABLE WITH EITHER PARTIAL OR FULL-BLANK PANEL DESIGNS.







ALUMINUM THERMAL STOREFRONT SYSTEM

- THERMAL PERFORMANCE: ADVANCED INSULATION AND ENERGY EFFICIENCY.
- DESIGN FLEXIBILITY: CUSTOMIZABLE GLAZING AND INSTALLATION OPTIONS.
- APPLICATIONS: SUITABLE FOR COMMERCIAL AND HOSPITALITY PROJECTS.
- SIGHTLINE: 2" (60MM)
- DEPTH: 4-1/2" (115MM)
- GLAZING: 1" (25MM)
- INSTALLATION: SCREW-SPLINE/SHEAR BLOCK ASSEMBLY, AND STACKED INSTALLATION
- U-VALUE (DIFFER BY GLASS TYPES): 0.21-0.45 BTU/H·FT²·°F
- WATER TIGHTNESS: 720 PA
- WIND LOAD CAPACITY: 5035 PA
- NOISE REDUCTION: ≤ 28-40 DB





RESIDENTIAL PROJECTS



- LUXURY VILLA - PALM DESERT
- LOCATION: CALIFORNIA, US
- PRODUCTS: THERMAL BREAK SLIDING DOOR, FOLDING DOOR, GARAGE DOOR, SWING DOOR



- LUXURY RESORT
- LOCATION: MIAMI BEACH
- PRODUCTS: SLIDING DOOR, FOLDING DOOR, CASEMENT WINDOW, PICTURE WINDOW



- LUXURY VILLA
- LOCATION: SACRAMENTO, CA
- PRODUCTS: SLIDING DOOR, FOLDING DOOR, GARAGE DOOR



- LUXURY VILLA
- LOCATION: SCOTTSDALE, AZ
- PRODUCTS: FOLDING DOOR, GARAGE DOOR, FRENCH DOOR, GLASS RAILING



- LUXURY VILLA
- LOCATION: CALIFORNIA, US
- PRODUCTS: SLIDING DOOR, FOLDING DOOR



- LUXURY VILLA
- LOCATION: LOS ANGELES, US
- PRODUCTS: ALUMINUM SLIDING DOOR, GLASS PARTITION, RAILING



- MODERN HOME - CULVER CITY
- LOCATION: CULVER CITY
- PRODUCTS: SLIDING DOOR, FOLDING DOOR, GARAGE DOOR



- LUXURY VILLA
- LOCATION: AZ
- PRODUCTS: SLIDING DOOR, FOLDING DOOR, PICTURE WINDOW



- LUXURY VILLA
- LOCATION: HOUSTON, TX
- PRODUCTS: SLIDING DOOR, FOLDING DOOR



- LUXURY VILLA
- LOCATION: CALIFORNIA, US
- PRODUCTS: SLIDING DOOR, FOLDING DOOR, CASEMENT WINDOW, PICTURE WINDOW



- HOUSE
- LOCATION: BOWIE, MARYLAND
- PRODUCTS: CRANK OUT WINDOW



- LUXURY VILLA
- LOCATION: LOS ANGELES, US
- PRODUCTS: FOLDING DOOR, ENTRY DOOR, CASEMENT WINDOW

COMMERCIAL PROJECTS



- HOTEL-RESIDENCE INN-TX
- LOCATION: HOUSTON, TX
- PRODUCTS: STOREFRONT, FIXED WINDOW, COMMERCIAL DOOR



- HOTEL-HAMPTON INN & SUITES
- LOCATION: FORTWORTH, TX
- PRODUCTS: PTAC WINDOW, COMMERCIAL DOOR



- APARTMENT - OLYMPIC TOWER
- LOCATION: PHILADELPHIA
- PRODUCTS: SLIDING DOOR, CURTAIN WALL, WINDOW WALL, COMMERCIAL DOOR



- HOTEL - RESIDENCE INN - MI
- LOCATION: PITTSFIELD TWP, MI
- PRODUCTS: PTAC WINDOW, STOREFRONT



- HIGH RISE APARTMENT - THE PIER
- LOCATION: TEMPE, AZ
- PRODUCTS: SLIM FRAME HEAVY-DUTY SLIDING DOOR, WINDOW WALL, BALCONY DIVIDER GLASS



- OFFICE BUILDING - DELTAX GLOBAL
- LOCATION: NEW YORK
- PRODUCTS: ALUMINUM CLAD PANEL CURTAIN WALL



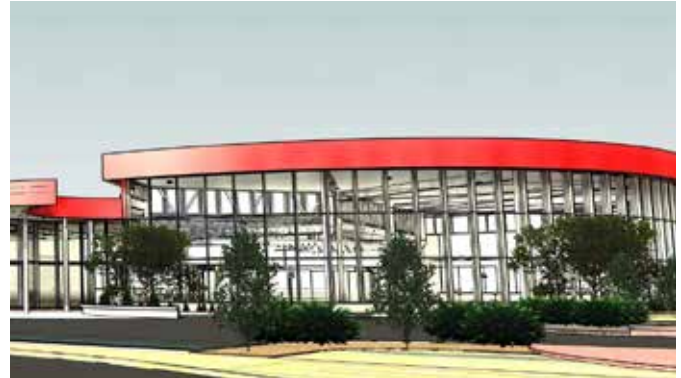
- HOTEL - DOUBLE-TREE HOTEL BY HILTON
- LOCATION: PERTH, AUSTRALIA
- PRODUCTS: UNITIZED CURTAIN WALL, GLASS PARTITION



- APARTMENT
- LOCATION: BIRMINGHAM, UK
- PRODUCTS: THERMAL BREAK ALUMINUM WINDOWS AND DOORS, CASEMENT WINDOW



- BANK - GRAND BANK FOR SAVINGS FSB
- LOCATION: HATTIESBURG, MISSISSIPPI
- PRODUCTS: WINDOW WALL, WINDOW WALL, STAINLESS STEEL STRUCTURE



- ELES OFFICE BUILDING
- LOCATION: WARREN, MICHIGAN
- PRODUCTS: STICK CURTAIN WALL SYSTEM, STEEL STRUCTURE CURTAIN WALL



- APARTMENT
- LOCATION: LOS ANGELES, CA
- PRODUCTS: CORNER SLIDING DOOR WITHOUT MULLION, CORNER FIXED WINDOW WITHOUT MULLION, COMMERCIAL ENTRY DOOR



- APARTMENT
- LOCATION: PHILADELPHIA
- PRODUCTS: FIXED WINDOW, CASEMENT WINDOW, HINGED DOOR, COMMERCIAL DOOR.

CERTIFICATION



VINCO PRODUCTS ARE NFRC CERTIFIED, ENSURING SUPERIOR ENERGY EFFICIENCY AND THERMAL PERFORMANCE. THIS CERTIFICATION ALLOWS CONSUMERS TO EASILY COMPARE PRODUCT PERFORMANCE, REDUCE ENERGY COSTS, AND SUPPORT SUSTAINABILITY, ENHANCING MARKET COMPETITIVENESS.



VINCO PRODUCTS ARE AAMA CERTIFIED, ENSURING THEY MEET INDUSTRY STANDARDS FOR DURABILITY AND PERFORMANCE. THIS CERTIFICATION ENHANCES PRODUCT RELIABILITY, INSTILLS CONSUMER CONFIDENCE, AND GUARANTEES EXCEPTIONAL PERFORMANCE IN EXTREME WEATHER CONDITIONS.



VINCO PRODUCTS ARE ENERGY STAR CERTIFIED, INDICATING THEIR EXCEPTIONAL ENERGY EFFICIENCY. THIS CERTIFICATION HELPS CONSUMERS IDENTIFY ENERGY-SAVING OPTIONS, REDUCE ENERGY COSTS, AND SUPPORTS ENVIRONMENTAL SUSTAINABILITY, POSITIVELY IMPACTING MARKET COMPETITIVENESS.



VINCO PRODUCTS ARE CSA CERTIFIED, ENSURING THEY MEET STRINGENT SAFETY AND PERFORMANCE STANDARDS. THIS CERTIFICATION ENHANCES MARKET CREDIBILITY AND PROVIDES CONSUMERS WITH CONFIDENCE IN THE SAFETY AND RELIABILITY OF THE PRODUCTS DURING USE.





Wynn@vincowindow.com

www.vincowindow.com

+1 (623) 387 7780

4227 S 36th PI, Phoenix,AZ 85040



Whatsapp